

# PORTLAND CULTURAL FOREST

Baha Sadreddin . Advising Professor: Nancy Cheng . Spring 2012

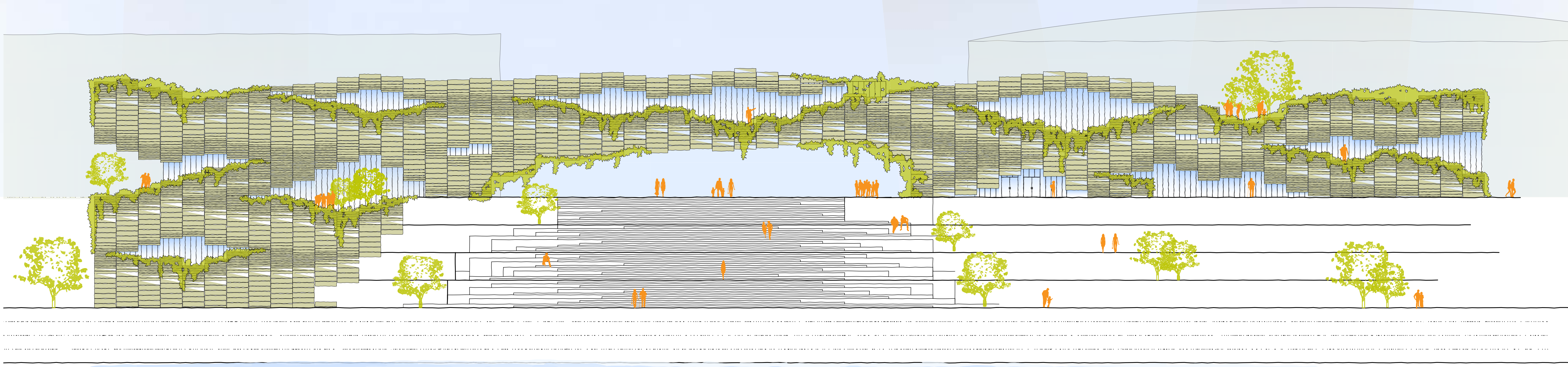
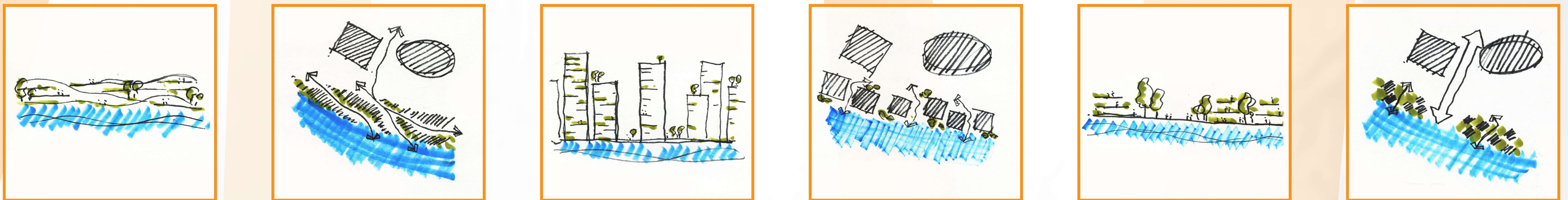
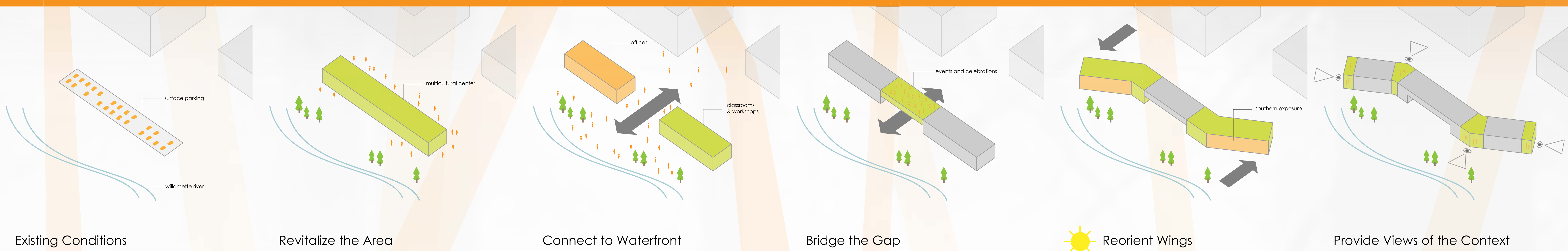
In a forest, through a series of interrelated patterns and processes, the larger ecosystem continuously transforms and adapts to balance the ever-changing conditions of the environment. These sustainable adaptations and changes support biodiversity and help thousands of species and organisms to thrive. Synergetically, all organisms, while having unique needs and characteristics, play an integral role in the larger ecosystem and are essential to its longevity.

In a way, biodiversity and cultural diversity follow a similar pattern. Distinct cultures around the globe have evolved around the changing environments that form their societies and they each possess unique characters and heritages shaped by their experiences. It is crucial for a responsible modern society to provide opportunities for diverse backgrounds and cultures to participate and become integral members of the community. These opportunities result in collaboration, exchange of experiences and personal growth strengthening the core of our communities.

Through academic research, dialogue and design explorations, this study investigates how cultural diversity mirrors biodiversity. By identifying shared values and patterns among adaptive natural environments that support biodiversity, the study further guides an architectural design process that reflects a similar pattern to support cultural diversity.

## Thesis Statement

... to design a sustainable built environment that responds and transforms to support varying activities that result in cross-cultural interaction and learning.



Waterfront Elevation View